

BAYSHORE VILLAGES SITE DEVELOPMENT SITE PLAN SUBMITTAL

FOR
TELFAIR BROKERS

36-08S-07W-0000-0260-0000
COMMERCIAL & SERVICES

INDEX OF SHEETS

- COVER
- 1 EXISTING CONDITIONS MAP
- 2 DEMOLITION PLAN
- 3 SITE GEOMETRY PLAN
- 4 ACCESS ROAD PLAN & PROFILE
- 5 ACCESS ROAD PLAN & PROFILE
- 6 UTILITY PLAN
- 7 CROSS SECTIONS
- 8 TYPICAL SECTION & DETAILS
- 9 AIRVAC DETAILS



LOCATION MAP

1" = 500'

CITY OF EASTPOINT
FRANKLIN COUNTY, FLORIDA

PREPARED FOR:

TELFAIR BROKERS
BILLY SCHULTZ
2356 SCHOONER LANDING
ST. GEORGE ISLAND, FLORIDA 32328
(678) 305-9420
billy@telfairbrokers.com

PREPARED BY:



GGI, LLC dba GENESIS GROUP
2507 CALLAWAY ROAD, SUITE 100
TALLAHASSEE, FLORIDA 32303
(850) 224-4400 (850) 681-3600 FAX
FL CA 00009660 FL LB 0006816
www.GenesisGroup.com

ENGINEER OF RECORD:

Mark T. Llewellyn
License Number: 37307

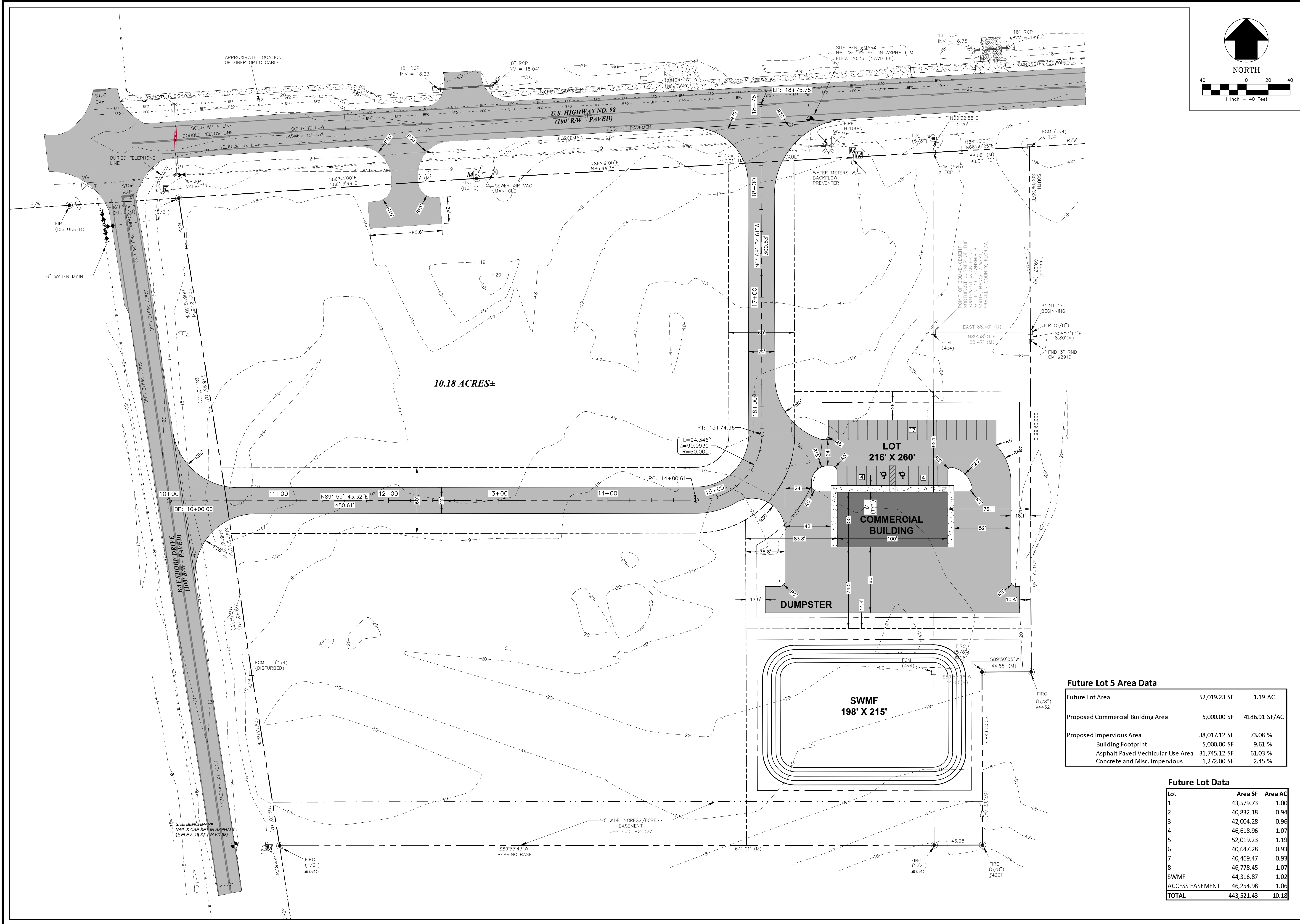
DATE: 06/01/2018

INCLUDED IN PLANS BY REFERENCE:

FLORIDA DEPARTMENT OF TRANSPORTATION FY 2016-17
DESIGN STANDARDS EBOOK AND APPLICABLE DESIGN
STANDARDS REVISIONS (DSRs) AT THE FOLLOWING WEBSITE:
<http://www.dot.state.fl.us/rddesign/DesignStandards/Standards.shtm>

FLORIDA DEPARTMENT OF TRANSPORTATION JULY 2016
STANDARD SPECIFICATIONS FOR ROAD AND BRIDGE
CONSTRUCTION AT THE FOLLOWING WEBSITE:
<http://www.dot.state.fl.us/programmanagement/Implemented/SpecBooks.shtm>

July 16, 2018 (17:13:21 EST)
 G:\6675\001\6675-001\LAND\01\BAYSHORE-VILLAGES_LAYOUT.DWG



10.18 ACRES±

LOT 5
 216' X 260'
 COMMERCIAL BUILDING
 100'

DUMPSTER

SWMF
 198' X 215'

Future Lot 5 Area Data

Future Lot Area	52,019.23 SF	1.19 AC
Proposed Commercial Building Area	5,000.00 SF	4186.91 SF/AC
Proposed Impervious Area	38,017.12 SF	73.08 %
Building Footprint	5,000.00 SF	9.61 %
Asphalt Paved Vehicular Use Area	31,745.12 SF	61.03 %
Concrete and Misc. Impervious	1,272.00 SF	2.45 %

Future Lot Data

Lot	Area SF	Area AC
1	43,579.73	1.00
2	40,832.18	0.94
3	42,004.28	0.96
4	46,618.96	1.07
5	52,019.23	1.19
6	40,647.28	0.93
7	40,469.47	0.93
8	46,778.45	1.07
SWMF	44,316.87	1.02
ACCESS EASEMENT	46,254.98	1.06
TOTAL	443,521.43	10.18

GENESIS
 FROM VISION TO REALITY
 GGI, LLC dba GENESIS GROUP
 2507 CALLAWAY ROAD, SUITE 100
 TALLAHASSEE, FLORIDA 32303
 FL CA 00009660 FL LB 0006816 FL LC 26000202 (850) 224-4400 (850) 681-3600 FAX

BAY & 98, LLC
BILLY SCHULTZ

SITE AND GEOMETRY PLAN
BAYSHORE VILLAGE SITE DEVELOPMENT

DESIGN REVIEW - 06/01/2018

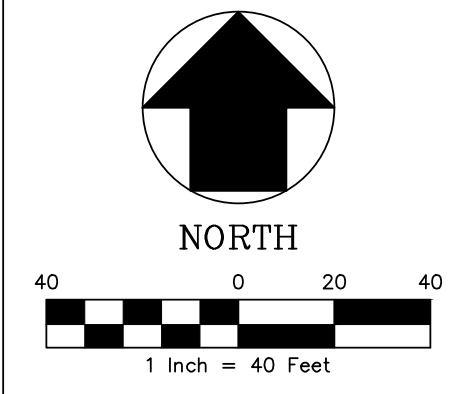
NO.	DATE	DESCRIPTION	REVISIONS
1			


DESIGNED BY: **S.R.W.** CHECKED BY: **M.T.L.** PROJECT NUMBER: **8675-001**
 DRAWN BY: **S.R.W.** SCALE: **1" = 40'** DATE: **06/01/2018**

PREPARED FOR: **Mark T. Llewellyn, P.E.**
 License Number: 37307

SHEET NUMBER: **3**

July 16, 2018 (17:13:21 EST)
 G:\6675\001\6675-001\LAND\01\BAYSHORE_VILLAGES_LAYOUT.DWG



 GENESIS FROM VISION TO REALITY GGI, LLC dba GENESIS GROUP 2507 CALLAWAY ROAD, SUITE 100 TALLAHASSEE, FLORIDA 32303 FL CA 00009560 FL LB 0006816 FL LC 26000202 (850) 224-4400 (850) 681-3600 FAX		PREPARED FOR BAY & 98, LLC BILLY SCHULTZ	
SHEET TITLE UTILITY PLAN		PROJECT NAME BAYSHORE VILLAGE SITE DEVELOPMENT	
SHEET NUMBER 3		DESIGN REVIEW - 06/01/2018	
NO.	DATE	DESCRIPTION	REVISIONS
DESIGNED BY:	SR.W.	CHECKED BY:	M.T.L.
DRAWN BY:	J.L.B.	SCALE:	1" = 40'
PROJECT NUMBER:	8675-001	DATE:	06/01/2018

Mark T. Llewellyn, P.E.
 License Number 37507